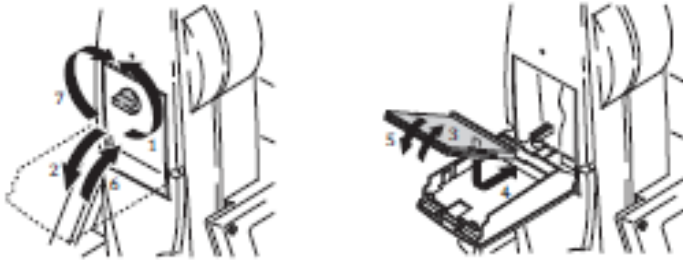
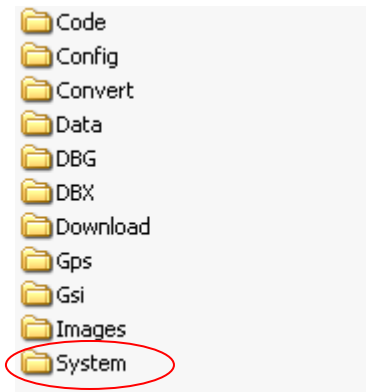


## Loading the Language Files or FW on the R9 totalstation

- 1) Take the CF card and put it into the totalstation.



- 2) Turn the totalstation on  
In that moment the following structure is automatically created on the CF card.



Take the CF card out again and put it in the PC

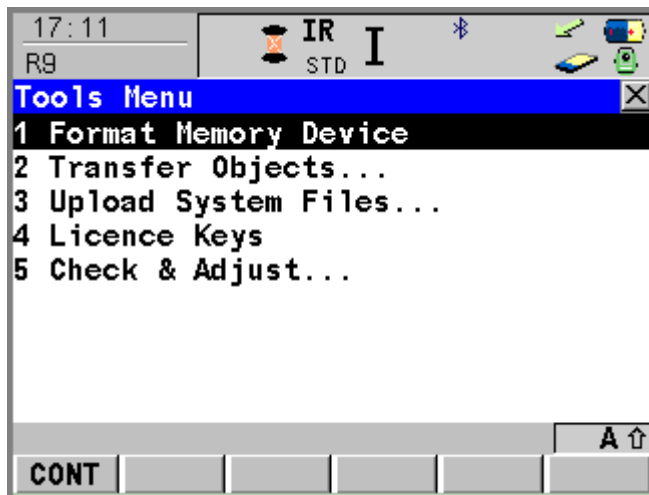
3. Please copy the FW file (**R9.fw**) and/or the Language file needed (e.g. **Sys\_Lang.sde**) in the **System Folder** on the CF card.

4. Put the CF card back into the totalstation.

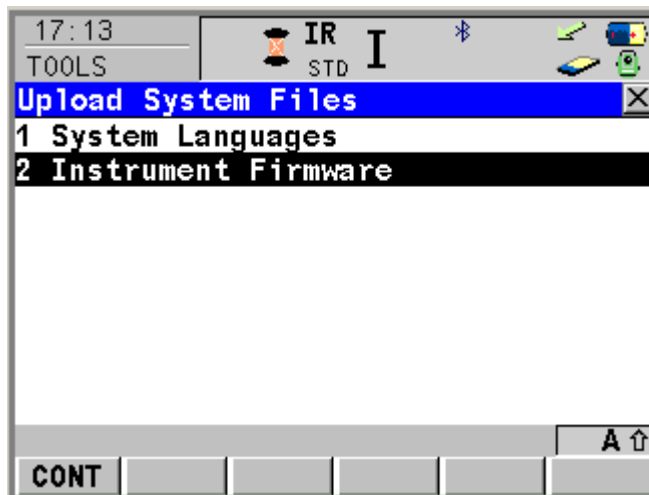
5. Starting from the Main Menu



Press 4 Tools and 3 Upload system Files

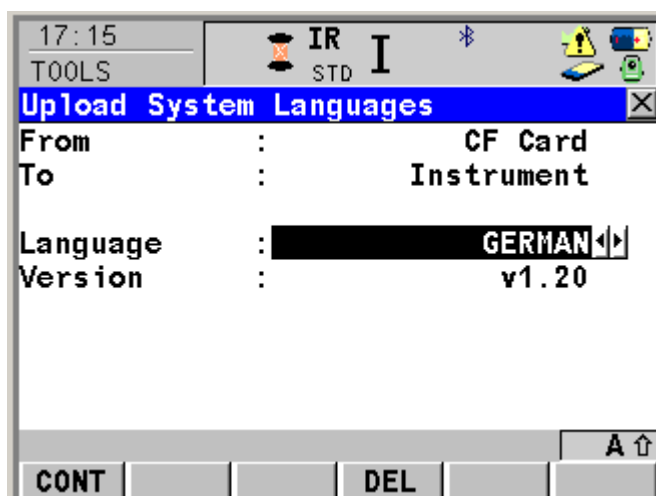


Select either **System Languages** or **Instrument Firmware** depending on what you want to load.



Example for **System Languages**:

You need to load the System languages **from the CF Card to the instrument**.



Press **F1 CONT**

The loading process starts. As soon as the loading process has finished you'll get an information that the sys language was loaded successfully and whether you wish to load another language ( up to 3 languages are possible in the R9).

Press **No** and you'll be back in the Main Menu.

6) Turn the total station off and on again.

7) Go to **Config**



**2 General Settings** and then **2 Language** and activate the language (by moving the focus on the language displayed and press **F1 Cont**) .

The language has changed now.